

The Integrated System Plan

C4NET – Reinventing Whole-of-System Planning
Eli Pack – Group Manager, System Planning

2024-10-09

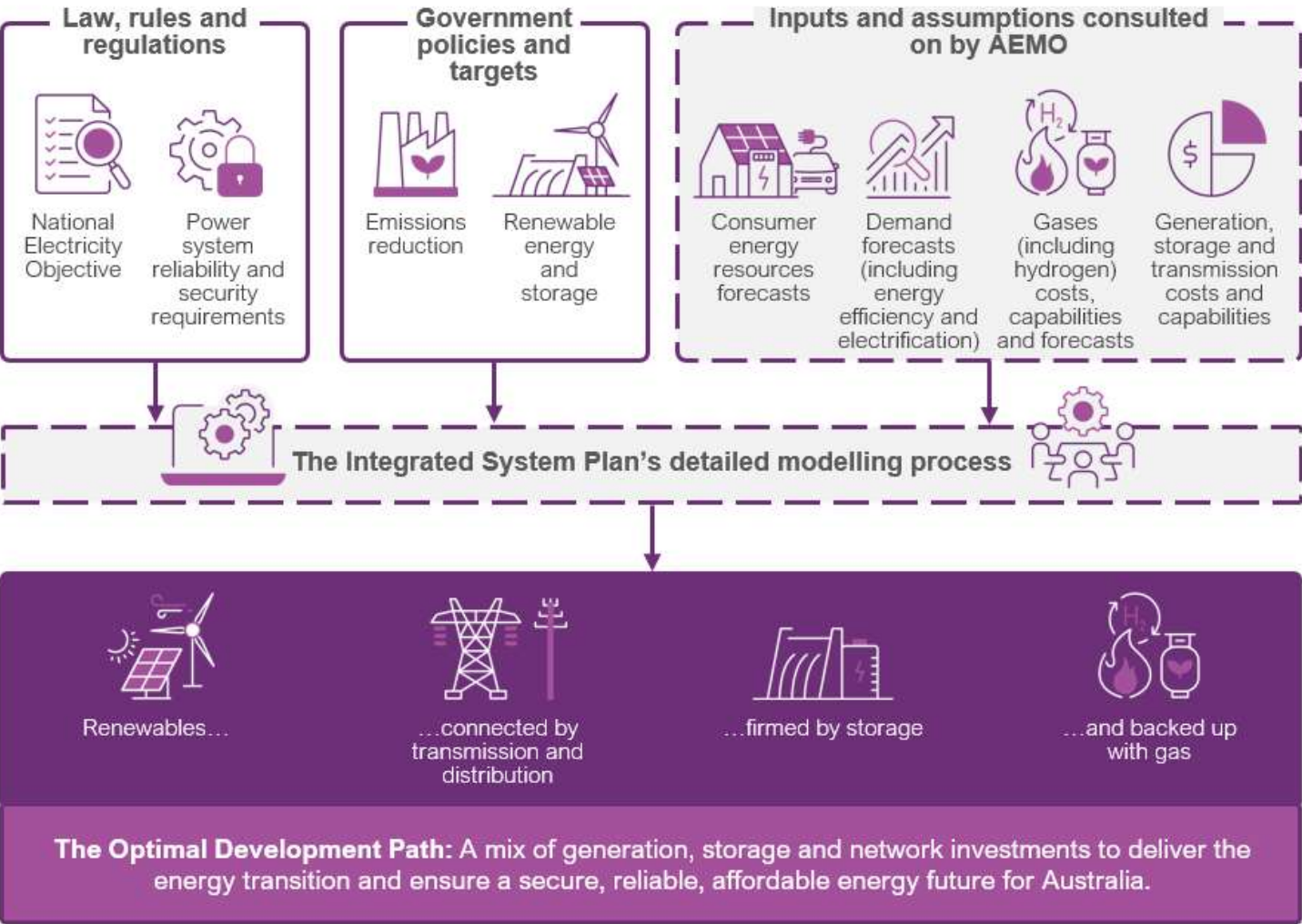


The Integrated System Plan is a roadmap for the energy transition



- A roadmap for the National Electricity Market (NEM) energy transition.
- Optimal development path for reaching net zero by 2050.
- Least-cost path for transition within Commonwealth and State policies.
- Provides expert information for a range of stakeholders.
- Serves regulatory purpose of identifying 'actionable' projects which should progress as urgently as possible.

The ISP takes standards, policies and consulted-on inputs and assumptions to model the optimal development path

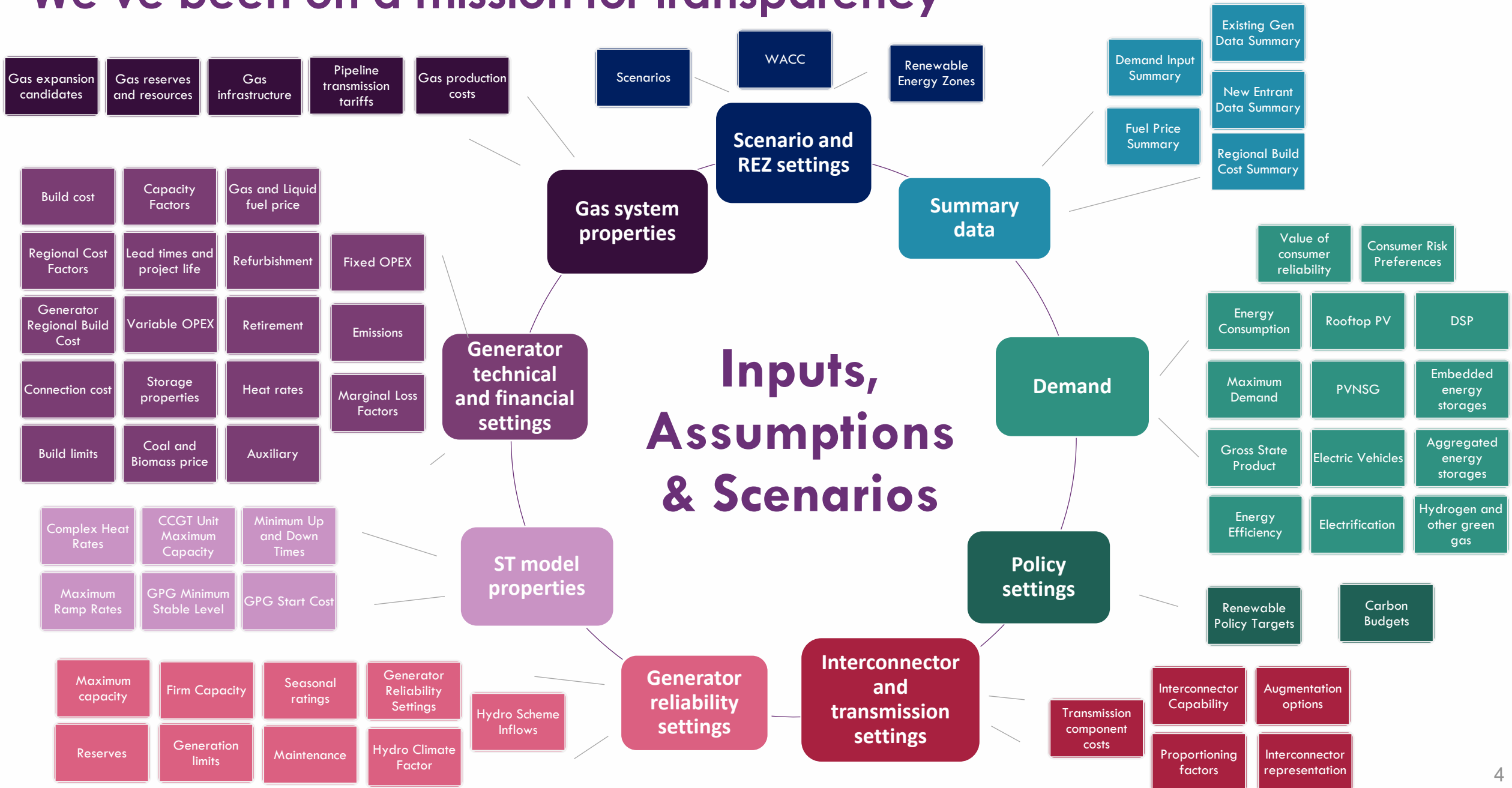


KEY

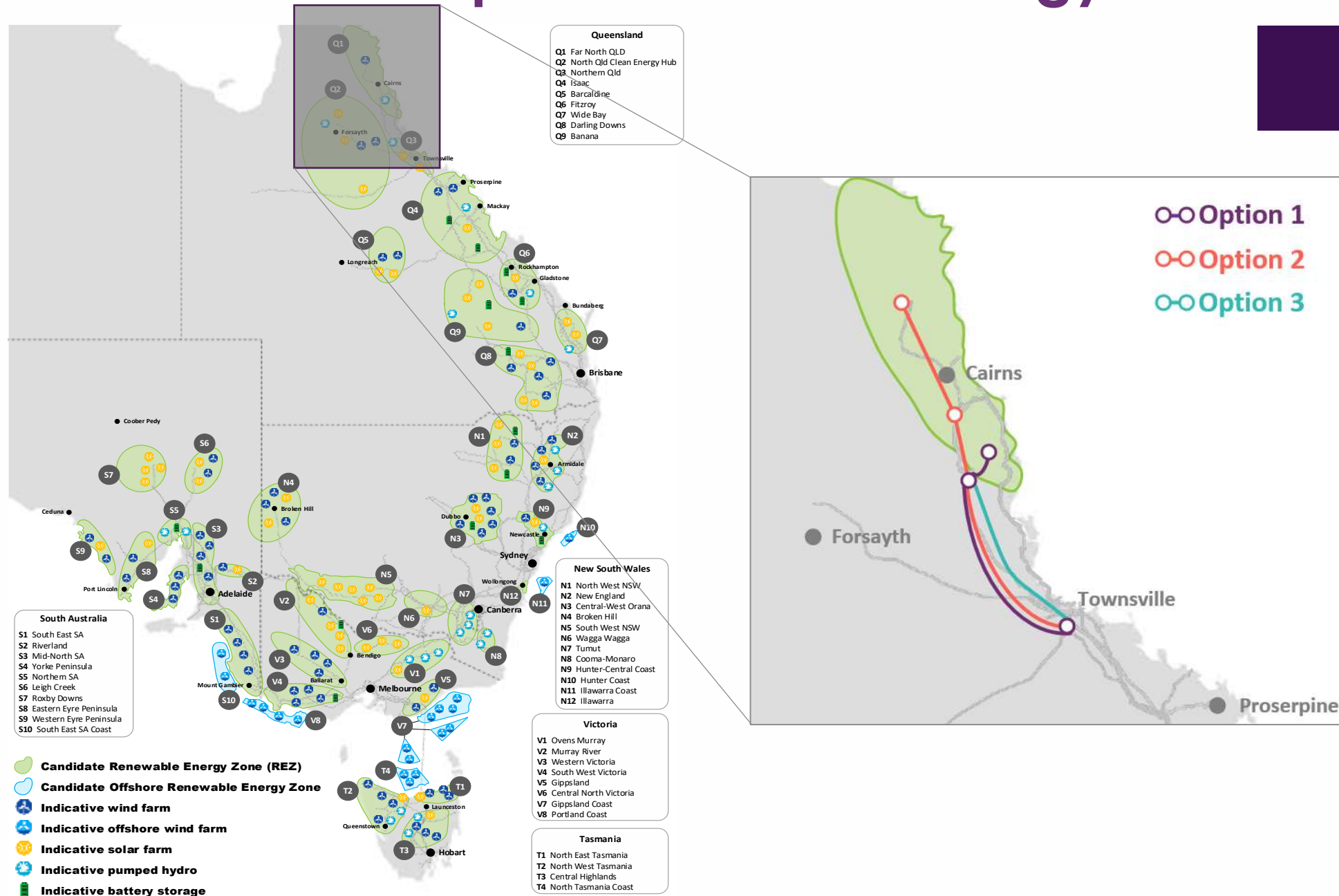
Standards and policies

AEMO consultative process

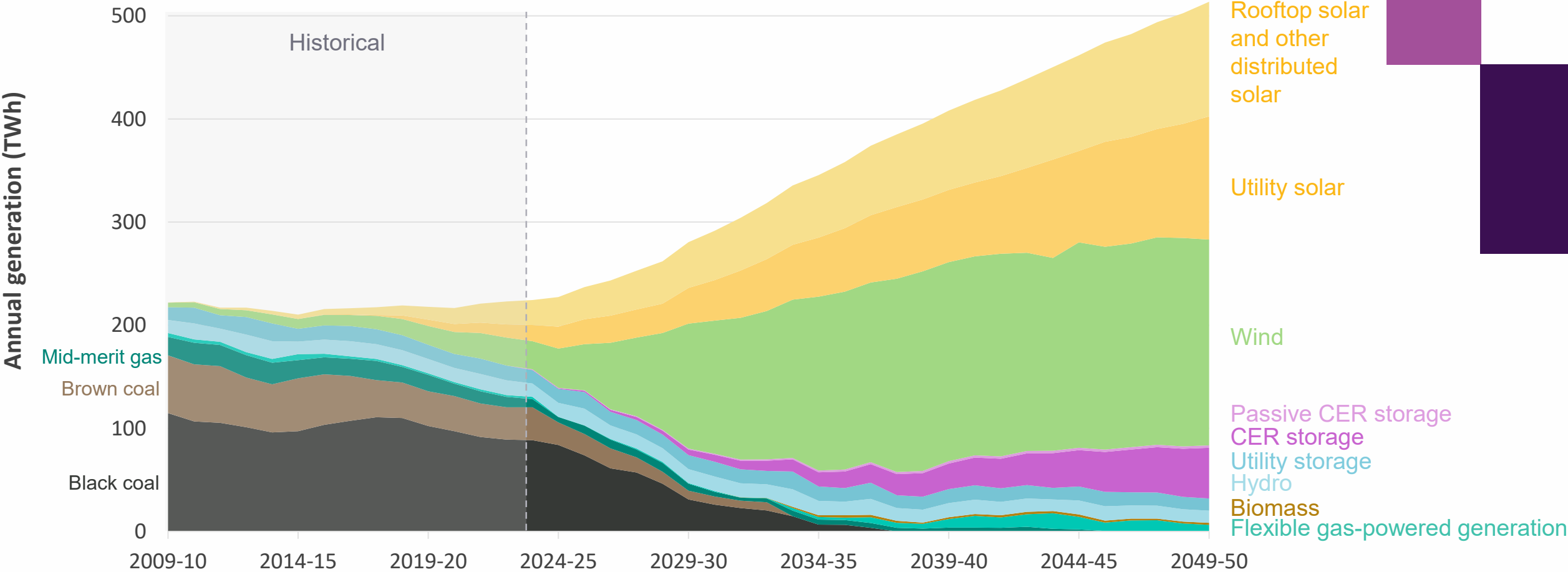
We've been on a mission for transparency

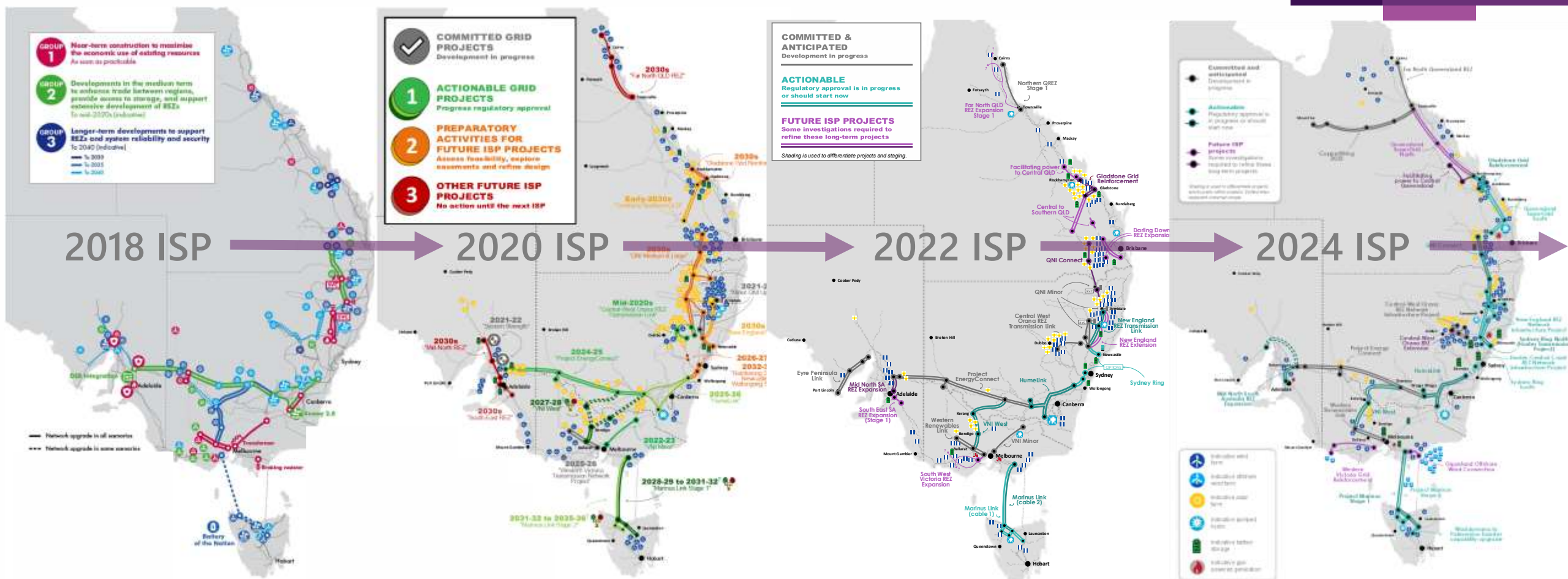


How could we develop a renewable energy zone?



The transition is well underway, with electricity generation shifting to low emissions and renewable energy







For more information visit
demo.com.au